

Morrisburg Model Village Project

Municipality of South Dundas



MORRISBURG MODEL VILLAGE PROJECT

BRINGING THE LOST
VILLAGE OF
MORRISBURG
TO LIFE



HISTORY

In the 1950s, a major project was initiated between Canada and the US and the Province of Ontario and New York State. The St Lawrence Seaway was created to accomplish two major objectives:

To increase the size of cargo ships able to navigate all the way from the Atlantic Ocean to the Great Lakes;

To add substantially to the hydro electric generation capability of the St Lawrence River for Canada and the US.



(Above) 1 July, 1958 - Morrisburg Lock 23 Disappears Under the St Lawrence River.

The flooding started on 1 July, 1958 when the temporary coffer dams were breached. It only took four days for the water to reach its current levels. However, the project took about four years in construction and much longer if you include all the various plans and studies. At the time it was one of the largest engineering projects of modern times.

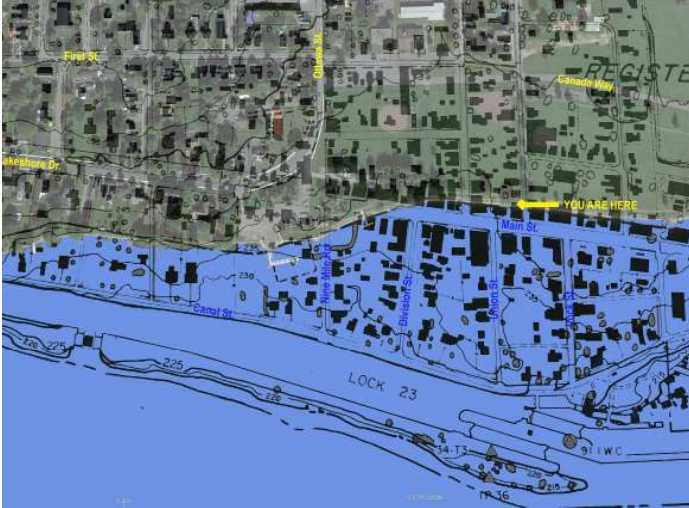
The major impact was to significantly raise the river water levels between the Cornwall Power Dam and the Iroquois Control Dam. This in turn flooded major areas of farm land and nine villages and hamlets that were lost altogether. All the downtown area of Morrisburg, the buildings, businesses, streets and their history, was lost under the St. Lawrence River. The following links provide much more information, including many pictures and maps:

[St Lawrence Pks Seaway History](#), [Lost Villages Museum](#), [Ghost Town Pix Lost Villages](#).

More fortunate than other "Lost Villages" that were completely flooded and rebuilt at locations removed from the new waterfront, much of Morrisburg's residential area was not lost. Many of the old historical residences, churches and the close relationship with the river were preserved. To see more details about the old Morrisburg that survived go to <http://morrisburgvictorian.blogspot.ca/>.



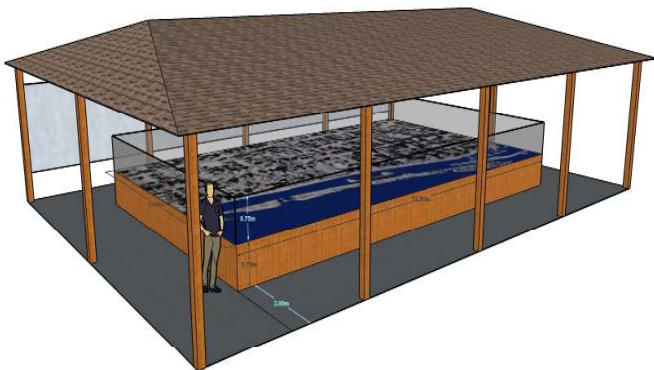
PROJECT



THE LOST VILLAGE

The Morrisburg Model Village will depict in miniature the lost downtown area, circa 1956, and the major residential area of Morrisburg that was preserved, at a 1:87 scale.

(Left) Then & Now Overlay Map: Ontario Hydro Map of Morrisburg as it existed prior to the flooding overlaid with a Google Earth satellite image from today.



THE MODEL

The model envisioned will be placed on the Morrisburg Waterfront Path overlooking where the old downtown area was, now under the St. Lawrence River.

(Left) Digital Rendering of Morrisburg Model Village



THEN & NOW

As an integral part of the model village, we will place a Then & Now Overlay Map sign at the waterfront.

(Left) Sign to be erected with Then & Now Overlay Map

APPROACH

This project will be tackled with high community involvement and support, in a similar manner to the very successful recent community projects such as the Earl Baker Park Garden, Playground, Splashpad and Dog Park projects. The basic approach will be as follows:

1

LAYING THE FOUNDATION

Build a Base Pad to represent the 1950 Topography (approximately 11.5m by 7m).

It will be appropriately contoured to scale, with a 15cm drop from the high point down to the river levels as they were then - at the 1:87 scale.

2

PAINTING THE STREETS

The Streets will be painted as per the *Then & Now Overlay Map*, highlighting the streets now underwater in blue.

3

CONSTRUCTING THE BUILDINGS

House & building models will be created within the community (estimated 200 houses and other buildings) by Schools (Shop Classes for model building and model painting by Art classes), Businesses & Other Organizations, Families & Individuals

At the 1:87 scale most house models will be less than 15cm.

Most will be made from wood. However, several alternative approaches may be utilized. For each building model, we will provide photograph(s), measurements and any other useful information. We intend to put special emphasis on creating high quality models for the "Notable" buildings (e.g. Churches, Banks & Classic Homes).

FUNDING REQUIREMENT

We estimate that we will need to raise a total of \$200,000 in cash and “in-kind” donations, sponsorships and grants from individuals, government & private organizations:

- \$100,000 to build the Morrisburg Model Village
- \$100,000 to provide funding of a proposed “Morrisburg Model Village Ongoing Improvements & Maintenance Fund” to assure ongoing funding for maintenance and improvements.

We are soliciting donations and sponsors to fund building the project and its ongoing improvement & maintenance. All donations above \$100 will receive Charitable Donation Tax Receipts.



(Above) Morrisburg waterfront path – location of the Morrisburg Model Village.

BENEFITS

TO THE COMMUNITY

There are many benefits associated with this project.

It will be a great addition to attract visitors, new residents and businesses to South Dundas that fits in well with and compliments current major area attractions such as Upper Canada Village, Upper Canada Playhouse, Lost Villages Museum, OPG Cornwall Visitor Centre, Lock 23 Divers;

It will be a demonstration to older residents that “We Do Remember” and a great South Dundas history educational opportunity for our younger residents and visitors.

The benefits of taking on major projects to strengthen the community spirit and pride are already very apparent from our experience with other recent community projects. The Morrisburg Model Village project, especially with its community involvement in building the model houses, has the potential to contribute even more to our sense of community.

We anticipate strong encouragement and support from the Ontario Power Generation Visitor Centre in Cornwall, Lost Villages Museum in Long Sault and Upper Canada Village – both during the project development and with ongoing mutually beneficial promotion of each other’s visitor sites in promotional literature, social media & website references.

An ancillary benefit is the potential to apply the concept in the other Upper Canada Region communities affected by the St. Lawrence Seaway Construction.

TO SPONSORS

The St. Lawrence Seaway construction in the 1950s affected every family and business in the region, directly or indirectly. In some cases, very dramatically. There is common recognition in the community of both the positive and negative impacts. The Project Team has been surprised by the high level of interest and support by everyone we have talked to.

As a good demonstration of this, after less than a week, our original announcement on Facebook reached more than 27,000 people, with almost 200 Shares and many positive comments. To put this into context, the population of the South Dundas Municipality is about 10,000.

Sample of Facebook comments:

“Fascinating idea. As someone who has moved to the area in recent years I find the whole seaway project very interesting and am very curious how the whole region looked before being flooded!”

“Wonderful idea. In time it would be great to see all of the towns, villages, and hamlets affected recreated in miniature”

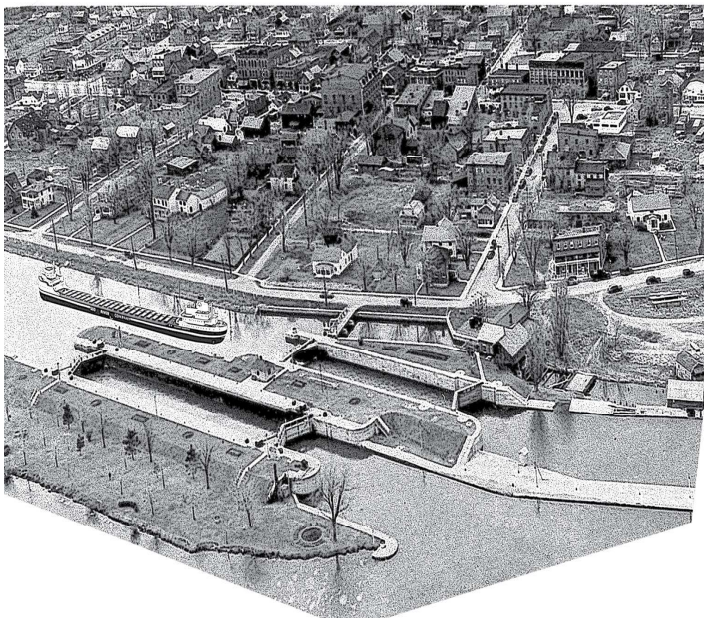
“if you need some help with this I worked in the construction field for over 20 years and if you need a concrete pad built I can do that as well and get you a good deal on concrete”

“Wow! Great idea!”

“Love this idea, and I love building models!”

“An excellent idea. We lived in Morrisburg from 1947 until 1954”

“Great Idea! I <3 Morrisburg!”



Any sponsoring organization or business serving this area will be contributing significantly to the success of the Morrisburg Model Village project. This will result in great name recognition, AND ... excellent promotional and goodwill value on an ongoing basis.

SPONSORSHIP

It is one thing to plan, and another to make it a reality. In order for this project to come to life, we rely on sponsorship and donations from generous community-minded businesses and individuals.

The Morrisburg Model Village Project will provide four levels of sponsorship recognition:

Recognition & Benefits	Platinum \$25,000	Gold \$10,000	Silver \$5,000	Bronze \$1,000
Platinum Recognition at Flood Day Anniversary Opening Ceremony	•			
Corporate Banner at Flood Day Anniversary Opening	•			
Gold Level Recognition on Flood Day Anniversary Opening Signage		•		
Silver Level Recognition on Flood Day Anniversary Opening Signage			•	
Bronze Level Recognition on Flood Day Anniversary Opening Signage				•
Cover Page Ad in Flood Day Anniversary Opening Program	•			
Interior Full-Page Ad in Flood Day Anniversary Opening Program		•		
Interior Half-Page Ad in Flood Day Anniversary Opening Program			•	
Interior Quarter-Page Ad in Flood Day Anniversary Opening Program				•
Front Page Ad in Monthly Newsletter	•			
Interior Full-Page Ad in Monthly Newsletter		•		
Interior Half-Page Ad in Monthly Newsletter			•	
Interior Quarter-Page Ad in Monthly Newsletter				•
Name & Logo at Platinum level on Site Honour Role Display Panel	•			
Name & Logo at Gold level on Site Honour Role Display Panel		•		
Name & Logo at Silver level on Site Honour Role Display Panel			•	
Name & Logo at Bronze level on Site Honour Role Display Panel				•
Name, Logo and Corporate Listing & Ad at Platinum location on website	•			
Name, Logo and Ad at Gold location on website		•		
Name, Logo and Ad at Silver location on website			•	
Name, Logo and Ad at Bronze location on website				•
Logo & Web Link on Sponsor Sidebar on every page of website	•	•	•	
Name, Logo & Web Link on the Sponsors Page of our website	•	•	•	•
Press Release Announcing the Sponsor Donation (& Level)	•	•	•	

How to Become a Sponsor

Potential Sponsors should contact John Gleed

Email: john.gleed@gmail.com;

Phone: 613 543 0933 or 613 266 7191.

In the near future, we expect to be able to accept online donations on our website

FOR MORE INFORMATION:

MORRISBURG MODEL VILLAGE PROJECT

Facebook: www.facebook.com/MorrisburgModelVillage

Website: www.morrisburgmodelvillage.ca

HISTORY

Seaway History: www.stlawrencepiks.com/seawayhistory

Lost Villages Museum: www.lostvillages.ca

Lost Villages: www.ghosttownpix.com/lostvillages

Old Morrisburg: morrisburgvictorian.blogspot.ca

